

# Somerley Suites



Parkland and lake



Parkland and lake



Formal south garden with Triton fountain

## THE BEDROOMS AT SOMERLEY

THE GUEST BEDROOMS AT SOMERLEY ARE ON THE FIRST AND SECOND FLOORS AND PROVIDE COMPLETE PRIVACY FOR OVERNIGHT GUESTS.

THE EIGHT BEDROOMS, INCLUDING THE KING EDWARD VII SUITE, CAN PROVIDE FOUR DOUBLES, FOUR TWINS AND ONE SINGLE WHICH IS PART OF THE AGAR SUITE.

THE BEDROOMS PROVIDE BREATHTAKING VIEWS FROM EACH ASPECT OF THE HOUSE AND GUESTS WILL ENJOY A FULL ENGLISH BREAKFAST IN THE DINING ROOM IN THE MORNING.

1 King Edward VII Suite	2 Queen Alexandra
<p>The Bridal suite, known as the King Edward VII suite, provides two double bedrooms including the Queen Alexandra bedroom. Favoured by future brides as both a dressing room and honeymoon suite. King Edward was godfather to The 5th Earl of Normanton and he, and Queen Alexandra, were frequent visitors to Somerley. This suite overlooks hundreds of acres of rolling parkland, the River Avon and the New Forest in the distance.</p>	
<p>Guest: _____</p> <p>Private self-contained wing with two double bedrooms</p>	



Somerley

# Somerley Suites

REMEMBER TO LOOK UP ON THE GALLERIED LANDING OF THE FIRST FLOOR WHERE YOU WILL SEE A GLASS COMPASS IN THE CEILING ATTACHED TO A WEATHER VANE ON THE ROOF, DESIGNED BY SAMUEL WYATT.

## 3 Annigoni



Pietro Annigoni visited Somerley in 1952, the same year he painted the famous portrait of the Queen. He painted The 5th Countess of Normanton whose portrait hangs in The Gallery. When the Italian artist signed the visitors' book he drew a pencil sketch of the gardens from this bedroom window. The room contains a collection of 18th century Dutch furniture and was also featured in the televised adaptation of Agatha Christie's 'Miss Marple – The Mirror Cracked'.

Guest:

Twin bedroom

## 4 Kaiser Wilhelm II



Kaiser Wilhelm II was the last King of Prussia and visited Somerley in 1907. This bedroom is situated at the front of the house with sweeping views down the main driveway and the top parkland. The room contains an 18th century empire mahogany bonheur-du-jour and an ornate rococo gilt wood and composition mirror. The ensuite features a luxurious bath positioned in the centre of the room looking directly across the top parkland to views of the forest in the distance.

Guest:

Double bedroom

## 5 Agar Suite

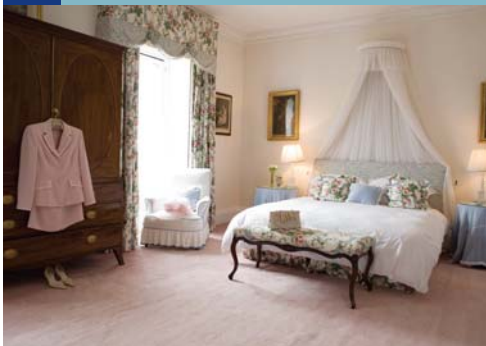


Agar is the family name, the 1st Earl being Archbishop Charles Agar. This suite was the nursery and schoolroom for the present Earl and his brother. The suite is named after his brother, The Hon Mark Agar, and the room has magnificent double aspect views of both the top parkland to the west and the formal south gardens, the Triton fountain and lower park to the south.

Guest:

Suite comprising twin bedroom and single bedroom

## 6 Viscount Somerton



Sons of The Earls of Normanton are given the title Viscount Somerton and this was the bedroom of the present Earl when he was a boy. A room of understated elegance, it provides wonderful views across the top parkland to the forest in the distance. The statue immediately outside is of The 5th Earl as a young boy, sculpted by his governess.

Guest:

Double bedroom

## 7 The Lady Barrington



Named after The 2nd Countess of Normanton, formerly Lady Barrington, who undertook the Grand Tour of Europe in the early 1800s with her husband. They filled Somerley with furniture, china and paintings and built on The Gallery to house the works of art. The bedroom has the magnificent southerly views across the parklands and down a Millennium avenue of lime trees, planted by the present Earl.

Guest:

Twin bedroom

## 8 The Lord Mendip



Archbishop Charles Agar, when Archbishop of Dublin, was made The 1st Earl of Normanton in 1806. His maternal uncle was the 1st Lord Mendip. In recent years, the line of succession ceased and the title, The Lord Mendip was passed to the present Earl. This bedroom has spectacular views across hundreds of acres of parkland with the River Avon and the New Forest in the distance.

Guest:

Twin bedroom